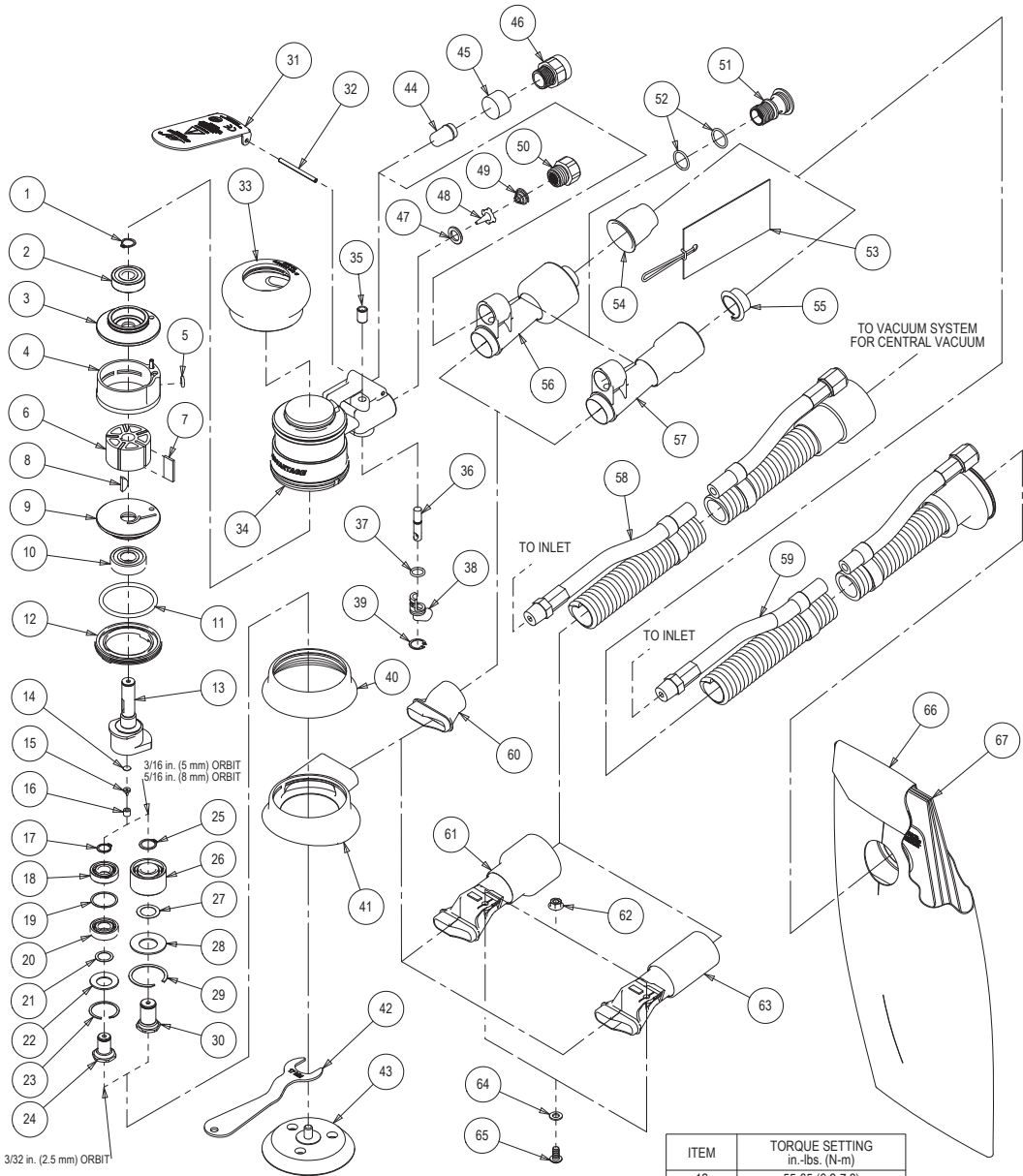


Parts Page



| ITEM | TORQUE SETTING in.-lbs. (N-m) |
|------|----------------------------------|
| 12 | 55-65 (6.2-7.3) |
| 46 | 16-20 (1.8-2.3) |
| 50 | 60-72 (6.8-8.1) |
| 51 | 36-48 (4.1-5.4) |
| 65 | 30-35 (3.4-4.0) |

Parts List

| Item | Part No. | Description | Qty. |
|------|----------|---------------------------------------------------------------------------------|----------|
| 1 | AVA0040 | EXTERNAL RETAINING RING | 1 |
| 2 | AVA0021 | BEARING - 2 SHIELDS | 1 |
| 3 | AVB0017 | REAR ENDPLATE | 1 |
| 4 | AVA0005 | CYLINDER ASSEMBLY | 1 |
| 5 | AVA0042 | O-RING | 1 |
| 6 | AVB0005 | ROTOR | 1 |
| 7 | AVA0010 | VANE | 5 |
| 8 | AVA0041 | WOODRUFF KEY | 1 |
| 9 | AVB0016 | FRONT ENDPLATE | 1 |
| 10 | AVA0019 | BEARING - 2 SHIELDS | 1 |
| 11 | AVA0045 | O-RING | 1 |
| 12 | AVA0001 | LOCK RING | 1 |
| 13 | AVB0084 | 3 x 3/32 in. (2.5 mm) ORBIT SHAFT BALANCER | 1 |
| | AVB0309 | 3 x 3/16 in. (5.0 mm) ORBIT SHAFT BALANCER | 1 |
| | AVB0349 | 3 x 5/16 in. (8.0 mm) ORBIT SHAFT BALANCER | 1 |
| 14 | AVA0122 | FILTER | 1 |
| 15 | AVA0121 | DUCKBILL CHECK VALVE | 1 |
| 16 | AVA0120 | VALVE RETAINER | 1 |
| 17 | AVA0107 | RETAINING RING | 1 |
| 18 | AVA0162 | BEARING - NO SEAL/SHIELDS | 1 |
| 19 | AVA0196 | SPACER | 1 |
| 20 | AVA0161 | BEARING - 1 SEAL | 1 |
| 21 | AVA0108 | SHIM | 1 |
| 22 | AVA0126 | BELLEVILLE WASHER | 1 |
| 23 | AVA0177 | RETAINING RING | 1 |
| 24 | AVB0083 | SPINDLE | 1 |
| 25 | AVA0090 | RETAINING RING | 1 |
| 26 | AVA0938 | DOUBLE ROW ANGULAR CONTACT BEARING - 1 SEAL | 1 |
| 27 | AVA0016 | SPACER | 1 |
| 28 | AVA0017 | BELLEVILLE WASHER | 1 |
| 29 | AVA0018 | RETAINING RING | 1 |
| 30 | AVB0312 | SPINDLE | 1 |
| 31 | AVA0332 | THROTTLE LEVER 3/32 in. (2.5 mm) ORBIT 12,000 RPM ROS | 1 |
| | AVA0070 | THROTTLE LEVER 3/16 in. (5 mm) ORBIT 12,000 RPM ROS | 1 |
| | AVA1712 | THROTTLE LEVER 5/16 in. (8 mm) ORBIT 12,000 RPM ROS | 1 |
| 32 | AVA0031 | LEVER SPRING PIN | 1 |
| 33 | AVB0007 | 2 1/2 in. (65 mm) GRIP | Optional |
| | AVB0008 | 2 3/4 in. (69 mm) GRIP | 1 |
| | AVB0009 | 3 in. (75 mm) GRIP | Optional |
| 34 | AVA1747 | HOUSING | 1 |
| 35 | AVA0015 | VALVE SLEEVE | 1 |
| 36 | AVA0008 | VALVE STEM ASSEMBLY | 1 |
| 37 | AVA0043 | O-RING | 1 |
| 38 | AVB0014 | SPEED CONTROL | 1 |
| 39 | AVA0039 | INTERNAL RETAINING RING | 1 |
| 40 | AVC0046 | NON-VAC SHROUD | 1 |
| 41 | AVC0047 | SuperVAC SKIRT - 3/32 in. (2.5 mm) ORBIT | 1 |
| | AVC0243 | SuperVAC SKIRT - 3/16 in. (5 mm) & 5/16 in. (8 mm) ORBIT | 1 |
| 42 | AVA0146 | 17 mm WRENCH | 1 |
| 43 | N/A | 1 Back-up Pad supplied with each tool (type determined by model) | 1 |
| 44 | AVA0062 | INTERNAL MUFFLER | 1 |
| 45 | AVA0068 | MUFFLER INSERT | 1 |
| 46 | AVA0166 | MUFFLER HOUSING | 1 |
| 47 | AVA0009 | VALVE SEAT | 1 |
| 48 | AVA0007 | VALVE | 1 |
| 49 | AVA0014 | VALVE SPRING | 1 |
| 50 | AVA0013 | INLET BUSHING ASSEMBLY | 1 |
| 51 | AVA0006 | SGV RETAINER | 1 |
| 52 | AVA0044 | O-RING | 2 |
| 53 | AVA0857 | 3/4 in./19 mm HOSE SEAL TAG W/INSTRUCTION | Optional |
| | AVA0933 | 1 in./28 mm HOSE SEAL TAG W/INSTRUCTION | 1 |
| 54 | AVA0778 | 1 in./28 mm HOSE SEAL | 1 |
| 55 | AVA0854 | 3/4 in./19 mm HOSE SEAL | Optional |
| 56 | AVA0410 | ASSEMBLY FOR 1 in./28 mm HOSE SuperVAC SGV SWIVEL EXHAUST FITTING | 1 |
| 57 | AVA0409 | ASSEMBLY FOR 3/4 in./19 mm HOSE SuperVAC SWIVEL EXHAUST FITTING | Optional |
| 58 | AVA0300 | Ø 3/4 in. VAC HOSE TO Ø 3/4 in. x 1 in./28 mm ADAPTER COUPLING AND AIRLINE ASSM | 1 |
| 59 | AVA0411 | Ø 3/4 in. VAC HOSE TO DOUBLE BAG FITTING AND AIRLINE ASSY | Optional |
| | AVA0412 | Ø 1 in. VAC HOSE TO DOUBLE BAG FITTING AND AIRLINE ASSY | 1 |
| 60 | AVC0108 | SuperVAC SGV SKIRT/SHROUD ADAPTER | 1 |
| 61 | AVA0099 | ROS SuperVAC™ CV 1 in./28 mm SWIVEL EXHAUST ASSEMBLY | Optional |
| 62 | AVA0048 | FLANGED NUT | 1 |
| 63 | AVA0205 | ROS SuperVAC CV 3/4 in. SWIVEL EXHAUST ASSEMBLY | 1 |
| 64 | AVA0047 | WASHER | 1 |
| 65 | AVA0769 | HEX SOCKET BUTTON HEAD MACHINE SCREW | 1 |
| 66 | AVA0468 | VACUUM BAG | 1 |
| 67 | AVA0470 | VACUUM BAG INSERT | 1 |