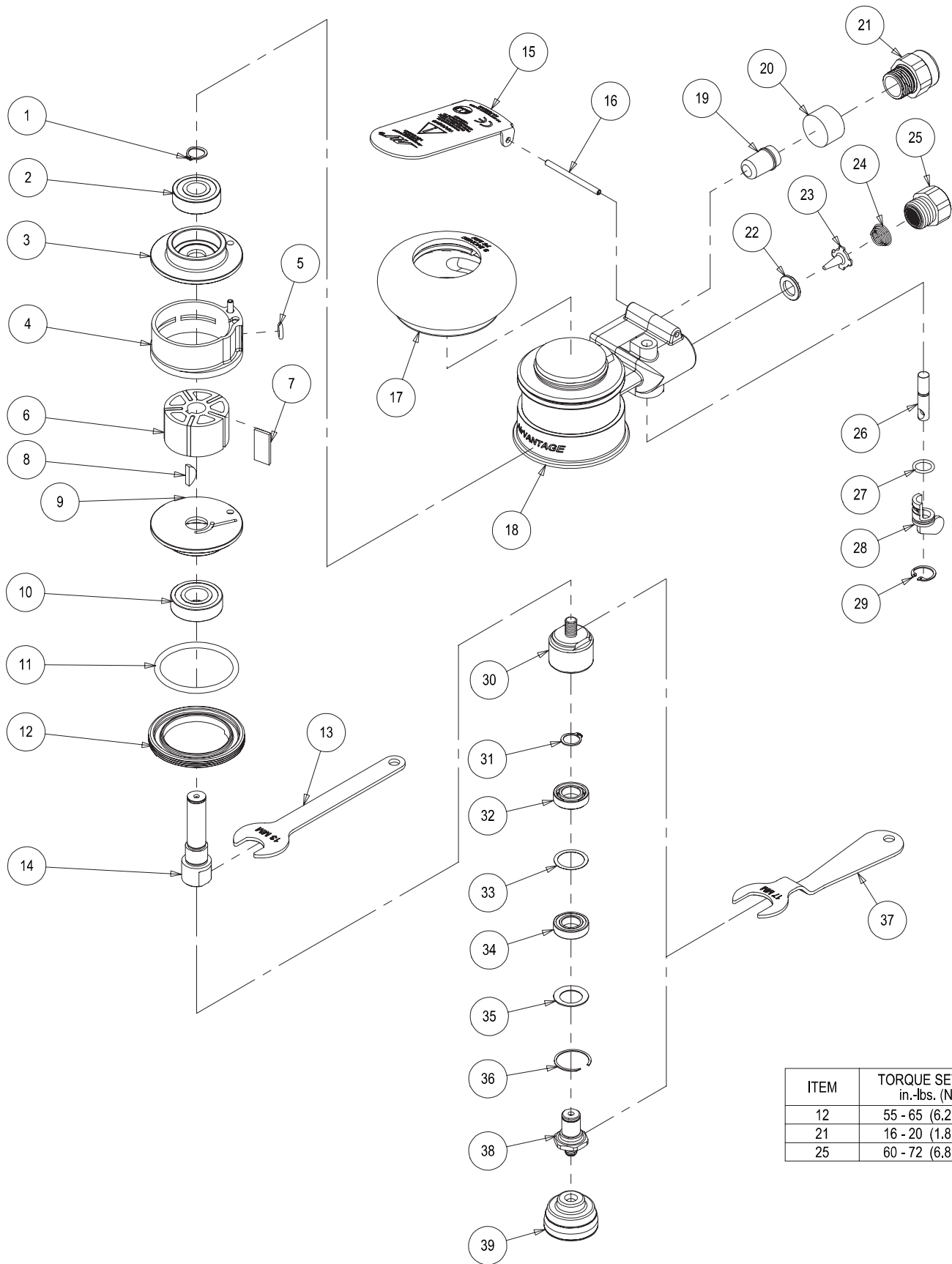


Parts Page



ITEM	TORQUE SETTING in.-lbs. (Nm)
12	55 - 65 (6.2 - 7.3)
21	16 - 20 (1.8 - 2.3)
25	60 - 72 (6.8 - 8.1)

Parts List

Item	Part No.	Description	Qty.
1	AVA0040	EXTERNAL RETAINING RING	1
2	AVA0021	BEARING - 2 SHIELDS	1
3	AVA0065	REAR ENDPLATE	1
4	AVA0067	CYLINDER ASSEMBLY	1
5	AVA0042	O-RING	1
6	AVB0005	ROTOR	1
7	AVA0010	VANE	5
8	AVA0041	WOODRUFF KEY	1
9	AVA0064	SMALL BORE FRONT ENDPLATE	1
10	AVA0019	BEARING - 2 SHIELDS	1
11	AVA0045	O-RING	1
12	AVA0001	LOCK RING	1
13	AVA0145	13 mm WRENCH (SUPPLIED WITH EACH TOOL)	1
14	AVB0099	MOTOR SHAFT	1
15	AVA0723	THROTTLE LEVER	1
16	AVA0031	LEVER SPRING PIN	1
17	AVB0007	2 1/2 in. GRIP	Optional
17	AVB0008	2 3/4 in. GRIP	1
17	AVB0009	3 in. GRIP	Optional
18	AVA0222	HOUSING	1
19	AVA1979	INTERNAL MUFFLER	1
20	AVA0068	MUFFLER INSERT	1
21	AVA0166	MUFFLER HOUSING	1
22	AVA0009	VALVE SEAT	1
23	AVA0007	VALVE	1
24	AVA0014	VALVE SPRING	1
25	AVA0013	INLET BUSHING ASSEMBLY	1
26	AVA0008	VALVE STEM ASSEMBLY	1
27	AVA0043	O-RING	1
28	AVB0014	SPEED CONTROL	1
29	AVA0039	INTERNAL RETAINING RING	1
30	AVB0178	MINI ORBITAL HEAD	1
31	AVA0107	RETAINING RING	1
32	AVA0149	BEARING - NO SEALS/SHIELDS	1
33	AVA0199	SPACER	1
34	AVA0150	BEARING 2 SEALS	1
35	AVA0109	BELLEVILLE WASHER	1
36	AVA0119	RETAINING RING	1
37	AVA0146	17 mm WRENCH	1
38	AVA0143	SPINDLE ASSEMBLY	1
39	NA	1 BACK-UP PAD SUPPLIED WITH EACH TOOL (TYPE DETERMINED BY MODEL)	1